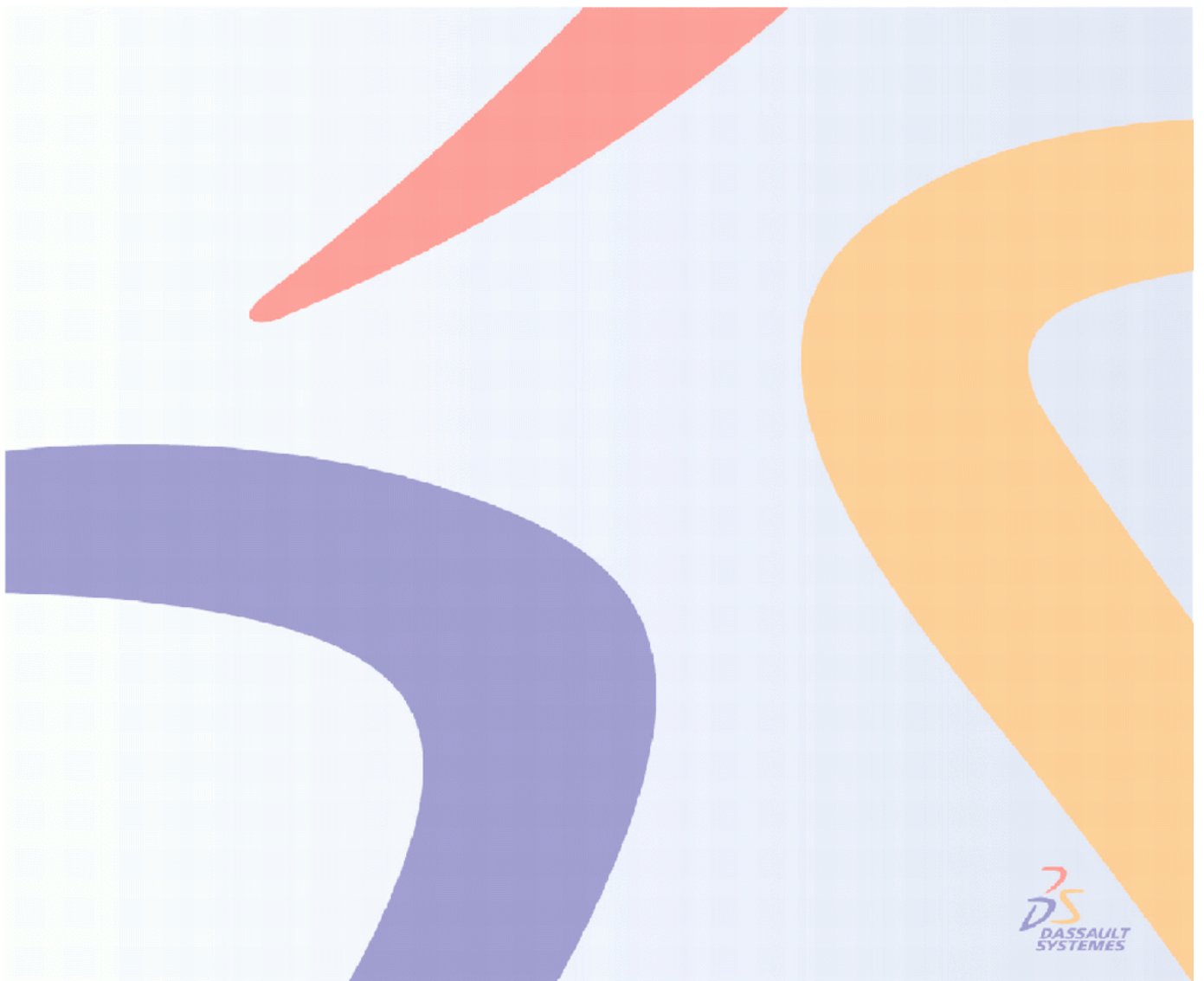


# ENOVIA V5R19 Course Material Catalog

January 2009 Edition



# ENOVIA V5R19 Course Material Catalog

<b>ENOVIA Course Material</b> .....	<b>3</b>
<b>Lifecycle Collaboration Solutions</b> .....	<b>3</b>
LCN: ENOVIA V5 VPM Lifecycle Collaboration (EDU-ENOV-E-LCN-F - V5R19) .....	4
LEH: ENOVIA V5 VPM Engineering Collaboration (EDU-ENOV-E-LEH-F - V5R19) .....	5
LUF: ENOVIA V5 VPM Fundamentals (EDU-ENOV-E-LUF-F - V5R19) .....	6
WPE: ENOVIA V5 VPM for Supply Chain Collaboration (EDU-ENOV-E-WPE-F - V5R19) ....	7
<b>SMARTTEAM Course Material</b> .....	<b>10</b>
<b>SMT Solutions</b> .....	<b>10</b>
PGM: ENOVIA SmarTeam Program Management (EDU-SMT-E-PGM-F - V5R19) .....	11
SED: ENOVIA SmarTeam Editor (EDU-SMT-E-SED-F - V5R19) .....	13
SEE: ENOVIA SmarTeam Supply Chain Engineering Exchange (EDU-SMT-E-SEE-F - V5R19)	
SFF: ENOVIA SmarTeam Fundamentals (EDU-SMT-E-SFF-F - V5R19) .....	16
STA: ENOVIA SmarTeam Administration for Foundation, Editor & Web Editor (EDU-SMT-E-STA-F -	
STI: ENOVIA SmarTeam Installation for Foundation, Editor & Web Editor (EDU-SMT-E-STI-F - V5R	
TPU: ENOVIA SmarTeam - CATIA Integration (EDU-SMT-E-TPU-F - V5R19) .....	19
WED: ENOVIA SmarTeam Web Editor (EDU-SMT-E-WED-F - V5R19) .....	20

# ENOVIA Course Material

## Lifecycle Collaboration Solutions



Course Code	EDU-ENOV-E-LCN-F
Brand & Release	ENOVIA V5R19
Duration	2 days
Language	English
Level	Fundamentals
Method	Companion and ILT

#### Training Material References

Instructor Foils: EDU-ENOV-E-LCN-FI-V5R19  
 Foils: EDU-ENOV-E-LCN-FF-V5R19  
 Exercises: EDU-ENOV-E-LCN-FX-V5R19

#### Objectives

Upon completion of this course, you will be able to:  
 -Manage the processes that drive engineering development using ENOVIA V5 VPM Client functionalities and ENOVIA VPM lifecycle  
 -Use Content Management advanced functionalities to manage products and processes documentation  
 -Manage complex product configuration-Drive engineering changes in complex development phases

#### Participants' Profile

Non-CAD Users, Engineers, Managers, Suppliers and Team leaders involved in product development

#### Prerequisites

Students attending this course should have knowledge of ENOVIA V5 VPM User Fundamentals

#### Content

This course teaches you how to best manage product data and lifecycle processes that drive engineering development. It addresses the advanced functionalities dedicated to Content Management, Change Management and Variant Management in the ENOVIA LCA Client and then in LCA Navigator.

1. Introduction to Lifecycle Collaboration
2. Content Management
3. Configuration Management
4. Change Management
5. Reporting Editor
6. Working with ENOVIA VPM Lifecycle

#### Exercises

Ex. 1: LifeCycle Management (100min) / All sectors  
 Ex. 2: Exercise Presentation (120min) / All sectors

Course Code	EDU-ENOV-E-LEH-F
Brand & Release	ENOVIA V5R19
Duration	1.5 days
Language	English
Level	Fundamentals
Method	Companion and ILT

#### Training Material References

Instructor Foils: EDU-ENOV-E-LEH-FI-V5R19  
 Foils: EDU-ENOV-E-LEH-FF-V5R19  
 Exercises: EDU-ENOV-E-LEH-FX-V5R19

#### Objectives

Upon completion of this course, you will be able to:

- Work in context
- Understand Concurrent Engineering projects
- Understand and use Relational Design
- Use the interoperability between the ENOVIA V5 VPM Client and CATIA V5
- Use the interoperability between VPM Navigator and CATIA V5

#### Participants' Profile

CAD Designers, Engineers in charge of product development

#### Prerequisites

Students attending this course should have knowledge of ENOVIA V5 VPM Fundamentals & CATIA V5 Fundamentals

#### Content

This course addresses the functionalities dedicated to manage CATIA data and the Digital Mock-Up (DMU) through interoperability between the ENOVIA LCA Client and CATIA V5 sessions.  
 The same processes will be addressed with VPM Navigator

- 1 .Introduction to Engineering Collaboration
2. Getting Started with Interoperability
3. Design in Context
4. Concurrent Engineering
5. Relation Design
6. Working with VPM Navigator

#### Exercises

Ex. 1: Standard Interoperability (55min) / All sectors  
 Ex. 2: ENOVIA V5 VPM (80min) / All sectors

Course Code	EDU-ENOV-E-LUF-F
Brand & Release	ENOVIA V5R19
Duration	2 days
Language	English
Level	Fundamentals
Method	Companion and ILT

Training Material References

	Instructor Foils: EDU-ENOV-E-LUF-FI-V5R19 Foils: EDU-ENOV-E-LUF-FF-V5R19 Exercises: EDU-ENOV-E-LUF-FX-V5R19 Detailed Steps: EDU-ENOV-E-LUF-FS-V5R19
--	--

Objectives

	Understand the concept of Product Lifecycle Management - Understand how business and industrial processes are implemented in the context of ENOVIA V5 VPM. - Understand the ENOVIA V5 VPM concepts and functionalities in domains of Product Structure Management and Content Management. - Understand Change Management and Variant Management.
--	---

Participants' Profile

	Engineers, Managers, CAD Designers, Suppliers and Team Leaders involved in product development
--	--

Prerequisites

	There is no pre-requisite for this course.
--	--

Content

	This course introduces you to the concept of Product Lifecycle Management and further explains how business and industrial processes are implemented in the context of ENOVIA V5 VPM.  1. Introducing PLM 2. Introduction to ENOVIA V5 VPM 3. Generic ENOVIA V5 VPM Concepts 4. Getting Started with ENOVIA V5 VPM Client 5. Introducing Content Management 6. Product Structure Management 7. Introduction to Configuration Management 8. Introducing Filters 9. Introduction to Change Management
--	---

Exercises

	Ex. 1: Master Exercise - Step 1 : Settings (5min) / All sectors Ex. 2: Master Exercise - Step 2 : Content Management (30min) / All sectors Ex. 3: Master Exercise - Step 3 : Product Class Management (5min) / All sectors Ex. 4: Master Exercise - Step 4 : Part Management (10min) / All sectors Ex. 5: Master Exercise - Step 5 : Product Management (40min) / All sectors Ex. 6: Master Exercise - Step 6 : GCO Management (20min) / All sectors Ex. 7: Master Exercise - Step 7 : Configuration Management (30min) / All sectors Ex. 8: Master Exercise - Step 8 : Action Management (30min) / All sectors
--	--

Course Code	EDU-ENOV-E-WPE-F
Brand & Release	ENOVIA V5R19
Duration	1 day
Language	English
Level	Fundamentals
Method	Companion and ILT

Training Material References

Instructor Foils: EDU-ENOV-E-WPE-FI-V5R19  
 Foils: EDU-ENOV-E-WPE-FF-V5R19  
 Exercises: EDU-ENOV-E-WPE-FX-V5R19

Objectives

Upon completion of this course you will be able to:

- Perform generic operations on the reconciliator
- Perform queries and Apply reconciliator rules
- Reconcile data and perform operations on this data

Participants' Profile

Engineers, CAD Designers, Reviewers Team Leaders and Suppliers involved in product development

Prerequisites

Students attending this course should have knowledge of ENOVIA V5 VPM Fundamentals, Engineering Collaboration

## Content

---

Introduction to WPE  
Need for Supply Chain Engineering Exchange  
Managing Reconciliation with ENOVIA V5 VPM  
The General Exchange Process  
Supply Change Engineering Exchange Architecture  
Benefits of WPE  
Typical exchange process example  
Work Package Creation & Extraction  
Exporting Data from ENOVIA VPLM Database  
Creating your Work Package  
About Work Package Interactive Extraction  
Working with Reconciliator  
The Reconciliation Process  
Accessing the Reconciliator Tool  
The Reconciliator Window  
Viewing Documents  
Identifying Documents for the Reconciliation  
About Mapping  
About Query  
Types of Queries  
Query Document By Part Id  
How to Query for Documents Using Part ID  
Query by Object Id  
How to Query for Documents Using Object ID  
Easy Query  
Global Query  
How to Use Global Query  
Query Settings  
Using the VPDM View to Map Objects  
How to Use VPDM View to Map Objects  
The Reconciliation Rules  
Why Use the Reconciliation Rules  
Reconciliation Rules  
Overwrite  
New Version / New Revision  
Reload  
External  
New  
Filter on PRC  
Applying Rules to Individual Objects  
Applying Rules Using the Global Set  
How to Apply Rules Using the Global Set  
Rules Settings  
Applying The reconciliation and Save

## What is new in this release

---

New course

## Exercises

Ex. 1: Master Exercise 1 - Step 1 : WorkPackage Creation (10min) / All sectors  
Ex. 2: Master Exercise 1 - Step 2 : Add Assembly and Create WorkPackage (15min) / All sectors  
Ex. 3: Master Exercise 1 - Step 3 : Map the WorkPackage with DB (15min) / All sectors  
Ex. 4: Master Exercise 1 - Step 4 : Applying Reconciliation Rules (10min) / All sectors  
Ex. 5: Master Exercise 1 - Step 5 : Check and Apply Reconciliation (10min) / All sectors  
Ex. 6: Master Exercise 2 - Step 1 : Preliminary Operations & WorkPackage creation (15min) / All sectors  
Ex. 7: Master Exercise 2 - Step 2 : Add Assembly and Send the WorkPackage (15min) / All sectors  
Ex. 8: Master Exercise 2 - Step 3 : Map the WorkPackage with DB (10min) / All sectors  
Ex. 9: Master Exercise 2 - Step 4 : Applying Reconciliation Rules (10min) / All sectors  
Ex. 10: Master Exercise 2 - Step 5 : Check and Apply Reconciliation (10min) / All sectors

# SMARTTEAM Course Material

## SMT Solutions



Course Code	EDU-SMT-E-PGM-F
Brand & Release	SMARTEAM V5R19
Duration	1.5 days
Language	English
Level	Fundamentals
Method	Companion and ILT

Training Material References

Instructor Foils: EDU-ENOV-E-PGM-FI-V5R19 Foils: EDU-ENOV-E-PGM-FF-V5R19 Exercises: EDU-ENOV-E-PGM-FX-V5R19
---

Objectives

The objective of this training is to learn how to work with PGM both as a Project Manager as well as a Project Team Member. Some administration topics are also covered.
--

Participants' Profile

SMARTEAM Administrators SmarTeam users Project Managers
---

Prerequisites

ENOVIA SmarTeam User Fundamentals
-----------------------------------

Content

<p>Part I: General Considerations</p> <ul style="list-style-type: none"> <li>Introduction to PGM</li> <li>PGM Target</li> <li>PGM Characteristics</li> <li>PGM Roles and Responsibilities</li> <li>Typical Project Stages</li> <li>Global Scenario</li> </ul> <p>Part II: Detailed Considerations</p> <ul style="list-style-type: none"> <li>Introduction</li> <li>Step 1: Create a New Project Plan <ul style="list-style-type: none"> <li>Step 1.1: Generate a New Project</li> <li>Project and Task Status</li> <li>Step 1.2: Edit Project in Microsoft Project</li> <li>See the properties of the Microsoft Project File</li> <li>SmarTeam Integration Toolbar in Microsoft Project</li> <li>SmarTeam and Microsoft Project Integration Menu</li> <li>Step 1.3: Promote the Project Plan <ul style="list-style-type: none"> <li>Do It Yourself: Create a Project Plan</li> </ul> </li> </ul> </li> <li>Step 2 – Project Progress <ul style="list-style-type: none"> <li>Step 2.1: View My Tasks</li> <li>My Tasks Filter</li> <li>Task Dependency</li> <li>Step 2.2: Update Task Status</li> <li>View the Project Plan Using SmarTeam Viewer <ul style="list-style-type: none"> <li>Do It Yourself: View and Update the Status of My Tasks</li> </ul> </li> </ul> </li> <li>Step 3: Update Project <ul style="list-style-type: none"> <li>Step 3.1: Update the Project Plan</li> <li>Project Owner</li> <li>View Different Snapshots of a Project Plan <ul style="list-style-type: none"> <li>Do It Yourself: Update Project Plan</li> </ul> </li> </ul> </li> </ul> <p>Workshop: Run a Full Scenario</p>
---

Exercises

---

None





Course Code	EDU-SMT-E-SED-F
Brand & Release	SMARTEAM V5R19
Duration	2 days
Language	English
Level	Fundamentals
Method	Companion and ILT

## Training Material References

Instructor Foils: EDU-ENOV-E-SED-FI-V5R19  
 Foils: EDU-ENOV-E-SED-FF-V5R19  
 Exercises: EDU-ENOV-E-SED-FX-V5R19

## Objectives

Upon completion of this course you will be able to :

- Build upon your knowledge of ENOVIA SmarTeam Fundamentals.
- Use the ENOVIA SmarTeam - Editor and Workflow products proficiently.
- Create, search, view, and manage your Product Data.
- Create, customize, work with, and manage Business Processes using the various Workflow modules.

## Participants' Profile

Reviewers, Engineers, Designers, Sales & Support Staff, and Managers.

## Prerequisites

SFF: SmarTeam Fundamentals (EDU-SMT-E-SFF-F - V5R18) Companion

## Content

This course will make you proficient in the use of SmarTeam - Editor and Workflow. You will learn how to manage the lifecycle of data stored in SmarTeam. To match the theory, a detailed PLM-based Master Exercise, split into short steps, allows you to learn how to work with SmarTeam in an industrial context.

- Getting Started with ENOVIA SmarTeam
- Managing a Project
- Viewing ENOVIA SmarTeam Information
- Managing Object Views
- Searching ENOVIA SmarTeam Information
- Using enovia SmarTeam - Office Integration
- Lifecycle Management
- Item Behavior
- Workflow
- Using SMARTEAM File Explorer

## Exercises

- Ex. 1: Connect to ENOVIA SmarTeam (15min) / All sectors  
 Ex. 2: Start a New Change Process (30min) / All sectors  
 Ex. 3: Redesign the Required Part (30min) / All sectors  
 Ex. 4: Manage the Process (20min) / All sectors  
 Ex. 5: Complete the Process (25min) / All sectors



Course Code	EDU-SMT-E-SEE-F
Brand & Release	SMARTTEAM V5R19
Duration	1 day
Language	English
Level	Fundamentals
Method	Companion and ILT

## Training Material References

Instructor Foils: EDU-ENOV-E-SEE-FI-V5R19  
Foils: EDU-ENOV-E-SEE-FF-V5R19  
Exercises: EDU-ENOV-E-SEE-FX-V5R19

## Objectives

Upon completion of this course you will be able to:

- Perform generic operations such as define integration settings, set the reconciliator environment
- Create a work package
- Perform queries
- Apply reconciliator rules
- Prepare ENOVIA SmarTeam to receive product data
- Reconcile data
- Perform operations on reconciled data

## Participants' Profile

CATIA and ENOVIA SmarTeam Users having to exchange data between companies.

## Prerequisites

TPU: ENOVIA SmarTeam CATIA Integration (EDU-SMT-E-TPU-F - V5R18)  
Companion

## Content

In the context of expanding production networks, fast and reliable product data exchange between Original Equipment Manufacturers and their partners is a key element in Product Life Cycle Management. This course focuses on the bidirectional exchange of engineering packages between CATIA and ENOVIA SmarTeam. More specifically you will learn how to perform generic reconciliation operations, export data, and define reconciliation rules.

### Getting Started

- Introduction to ENOVIA SmarTeam Supply Chain

### Exchange

- Need for Supply Chain Collaboration
- Managing Supply Chain Exchange with ENOVIA SmarTeam
- Introducing SEE (Supply Chain Engineering Exchange)
- Typical Process
- Benefits
- Working with SEE
  - About Reconciliator
  - Perform Settings for SEE
  - SEE Window
- General Description
  - About Loading Documents
  - Reconciliation Process

### Identifying Documents

- Performing Queries
  - Identification Methods
  - How to perform Query
  - Customizing the Queries
- Viewing the Documents
  - Using the CATIA View
  - Using the CATIA 3D View
  - Using the List View
- Customizing Queries
  - Why do we Customize Queries
  - Types of Query Customization
  - How to Customize Queries

### Defining Reconciliation Rules

- Why Reconciliation Rules
- Types of Rules
- Identifying Rules in CATIA Tree
- Applying Rules using Global Sets
- How to Apply Rules

## Exercises

- Ex. 1: Master Exercise 1 (65min) / All sectors
- Ex. 2: Master Exercise 2 (50min) / All sectors



Course Code	EDU-SMT-E-SFF-F
Brand & Release	SMARTTEAM V5R19
Duration	0.5 day
Language	English
Level	Fundamentals
Method	Companion and ILT

Training Material References

Instructor Foils: EDU-ENOV-E-SFF-FI-V5R19 Foils: EDU-ENOV-E-SFF-FF-V5R19
---

Objectives

Upon completion of this course you will be able to... <ul style="list-style-type: none"><li>- Understand the basics of PLM and ENOVIA SmarTeam.</li><li>- Understand how ENOVIA SmarTeam stores and manages different types of Product information.</li><li>- Understand the basic concepts of Lifecycle Management and Workflow</li></ul>
--

Participants' Profile

ENOVIA SmarTeam - Editor Users
--------------------------------

Content

<ul style="list-style-type: none"><li>- Introduction to ENOVIA SmarTeam</li><li>- ENOVIA SmarTeam Basics</li><li>- Lifecycle Basics</li><li>- Workflow Basics</li></ul>
---

Exercises

Ex. 1: Initiating and Handling a Process / All sectors
--



Course Code	EDU-SMT-E-STA-F
Brand & Release	SMARTEAM V5R19
Duration	3 days
Language	English
Level	Fundamentals
Method	Companion and ILT

#### Training Material References

Instructor Foils: EDU-SMT-E-STA-FI-V5R18  
Foils: EDU-SMT-E-STA-FF-V5R18  
Exercises: EDU-SMT-E-STA-FX-V5R18

#### Objectives

In this course you will learn how to create a Data Model for a customer. All related topics like Vault configuration and Workflow design will be broached.

#### Participants' Profile

The course is aimed for new SMARTEAM Administrators

#### Prerequisites

SMARTEAM Fundamentals (SFF)

#### Content

SMARTEAM Administration Tools (overview)  
The Data Model  
SMARTEAM Data Model Designer  
SMARTEAM databases and related utilities  
Setting up Profile Cards  
The Sequence Designer  
Default Values  
Lookup Table  
User Maintenance  
Project-based Authorizations  
Script Maintenance  
Using the Menu Editor Utility  
NLS – National Language Support  
Vault Configuration & Administration  
Admin Functionality  
Setting Up the Lifecycle Options  
Lifecycle Rules Setup  
Integration Tools Setup  
Design Copy Tool  
Common File Objects  
SMARTEAM Import / Export  
Workflow Design & Administration  
Managing a Flow Process

#### Exercises

Ex. 1: Data Modeling and MSDE database (60min) / All sectors  
Ex. 2: Project Based Authorizations (45min) / All sectors  
Ex. 3: Form Design and Script Maintenance (45min) / All sectors  
Ex. 4: System Configuration and Lifecycle Rules Setup (20min) / All sectors  
Ex. 5: Import/Export & Workflow (30min) / All sectors  
Ex. 6: Vault Maintenance and Life cycle Rules Setup (30min) / All sectors  
Ex. 7: Integration Tools Setup (30min) / All sectors  
Ex. 8: Import/Export & Workflow (30min) / All sectors



Course Code	EDU-SMT-E-STI-F
Brand & Release	SMARTEAM V5R19
Duration	1 day
Language	English
Level	Fundamentals
Method	Companion and ILT

Training Material References

	Instructor Foils: EDU-ENOV-E-STI-FI-V5R19 Foils: EDU-ENOV-E-STI-FF-V5R19 Exercises: EDU-ENOV-E-STI-FX-V5R19
--	---

Objectives

	Understanding ENOVIA SmarTeam Architecture. Installation of ENOVIA SmarTeam Foundation, Editor, Web Editor products.
--	---

Participants' Profile

	The course is aimed for new ENOVIA SmarTeam IT Administrators
--	---

Prerequisites

	ENOVIA SmarTeam User Fundamentals
--	-----------------------------------

Content

	ENOVIA SmarTeam Architecture Hardware and Software requirements Foundation Services Overview ENOVIA SmarTeam Core Services ENOVIA SmarTeam Foundation Installation ENOVIA SmarTeam Editor Installation ENOVIA SmarTeam Web Server Installation Pre-Installation Setup Pre-Installation Installation ENOVIA SmarTeam Silent installation Backup the system
--	--

Exercises

	Ex. 1: Create Administrative User (15min) / All sectors Ex. 2: Install SMARTEAM Foundation (20min) / All sectors Ex. 3: Install SMARTEAM Editor (20min) / All sectors Ex. 4: Install SMARTEAM Web Editor (20min) / All sectors Ex. 5: Install SMARTEAM Viewer (20min) / All sectors Ex. 6: Install SMARTEAM Markup Monitor (20min) / All sectors
--	---



Course Code	EDU-SMT-E-TPU-F
Brand & Release	SMARTEAM V5R19
Duration	1 day
Language	English
Level	Fundamentals
Method	Companion and ILT

Training Material References

Instructor Foils: EDU-ENOV-E-TPU-FI-V5R19 Foils: EDU-ENOV-E-TPU-FF-V5R19 Exercises: EDU-ENOV-E-TPU-FX-V5R19
---

Objectives

Upon completion of this course you will be able to : - Manage CATIA products with ENOVIA SmarTeam - Manage the various CATIA links and lifecycles associated with CATIA products - Understand how the concepts of Relational Design and Collaborative Design are implemented - Use Properties Mapping - Use Standard CATIA Parts and Catalogs
--

Participants' Profile

Engineers, CAD Designers, Suppliers and Team Leaders involved in product development
--

Prerequisites

SFF: ENOVIA SmarTeam Fundamentals (EDU-SMT-E-SFF-F - V5R18) SED: ENOVIA SmarTeam Editor (EDU-SMT-E-SED-F - V5R18)
--

Content

<ul style="list-style-type: none"><li>- Introduction to CATIA Integration</li><li>- Basic Operations in ENOVIA SmarTeam</li><li>- Assembly Management</li><li>- CATIA Links in ENOVIA SmarTeam</li><li>- Lifecycle Management</li><li>- Relational Design</li><li>- Collaborative Design</li><li>- Mapping of Properties</li><li>- Standard Parts and Catalogs</li><li>- ENOVIA SmarTeam Tools</li><li>- Course Sum Up</li></ul>
--

Exercises

Ex. 1: Basic Operations in ENOVIA SmarTeam (15min) / All sectors Ex. 2: Assembly Management (25min) / All sectors Ex. 3: Lifecycle Management (15min) / All sectors Ex. 4: Relational Design (30min) / All sectors Ex. 5: Mapping Properties (20min) / All sectors Ex. 6: Standard Parts and Catalogs (20min) / All sectors
--



Course Code	EDU-SMT-E-WED-F
Brand & Release	SMARTEAM V5R19
Duration	1 day
Language	English
Level	Fundamentals
Method	Companion and ILT

## Training Material References

Instructor Foils: EDU-ENOV-E-WED-FI-V5R19  
Foils: EDU-ENOV-E-WED-FF-V5R19  
Exercises: EDU-ENOV-E-WED-FX-V5R19

## Objectives

- Build upon your knowledge of SmarTeam Fundamentals
- Use the SmarTeam - Web Editor proficiently
- Create, search, view, and manage your Product Data using Web Editor
- Use the integrated Workflow functionality to initiate and work with Processes in a collaborative environment

## Participants' Profile

Engineers, Designers, Managers, Sales & Support Staff, and Suppliers who want to learn SmarTeam - Web Editor for their Collaborative PLM (cPLM) needs.

## Prerequisites

SFF: SmarTeam Fundamentals (EDU-SMT-E-SFF-F - V5R18) Companion

## Content

This course is designed to teach you how to work with SMARTEAM - Web Editor. You will learn how to manage the lifecycle of SMARTEAM data, and work with this data. You will be able to immediately practice what you have learnt in a real-life scenario.

- Getting Started with the Web Editor
- Browsing Projects and Documents
- Viewing Information
- Using Search Facility
- Creating and Managing Information
- Performing Lifecycle Operations
- Using the Workflow Facility

## Exercises

- Ex. 1: Step 1: New User / All sectors
- Ex. 2: Step 2: Search for Part / All sectors
- Ex. 3: Step 3: Create a Defect Analysis Report / All sectors
- Ex. 4: Step 4: Initiate an ECR Process / All sectors